



Sports & Physical Education

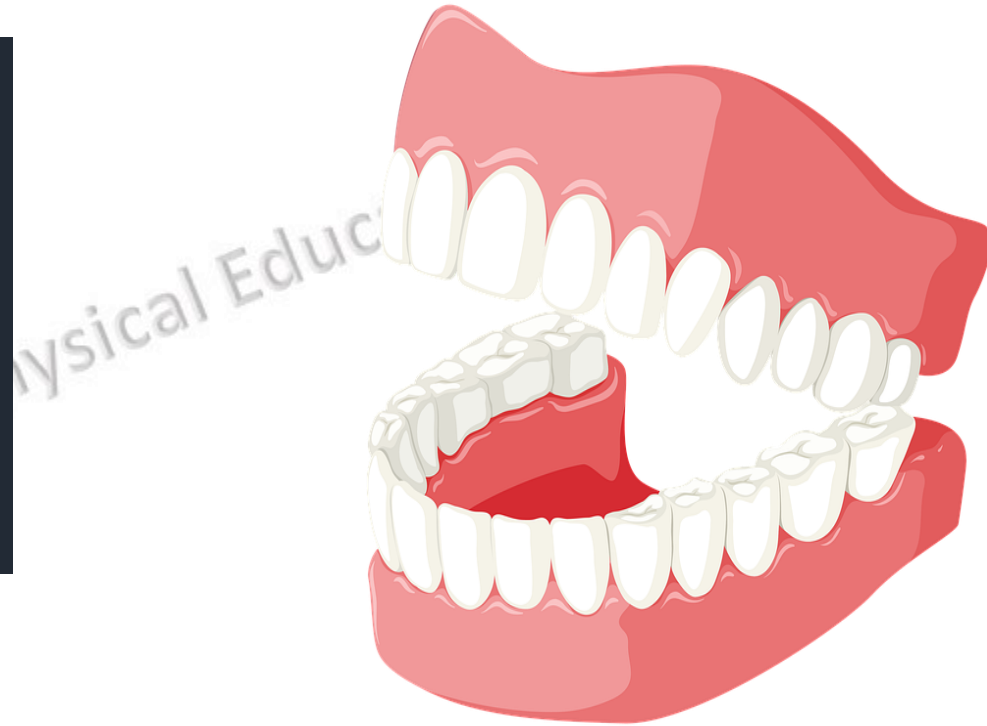
Human Anatomy

Teeth

Teeth



The teeth are the hardest substances in the human body. Besides being essential for chewing, the teeth play an important role in speech.



Teeth



A normal adult mouth has 32 teeth.

16 in Upper jaw and 16 in lower jaw.

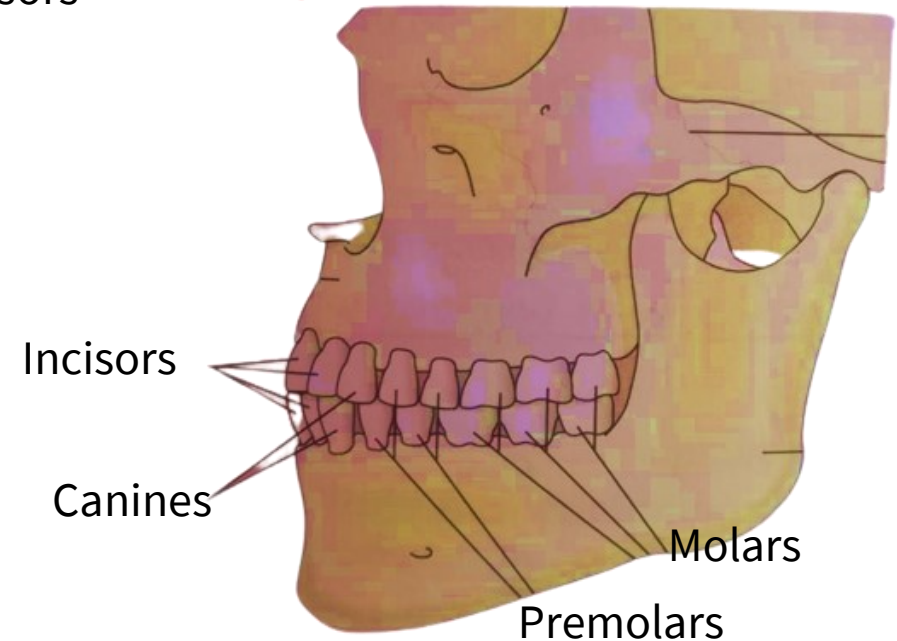
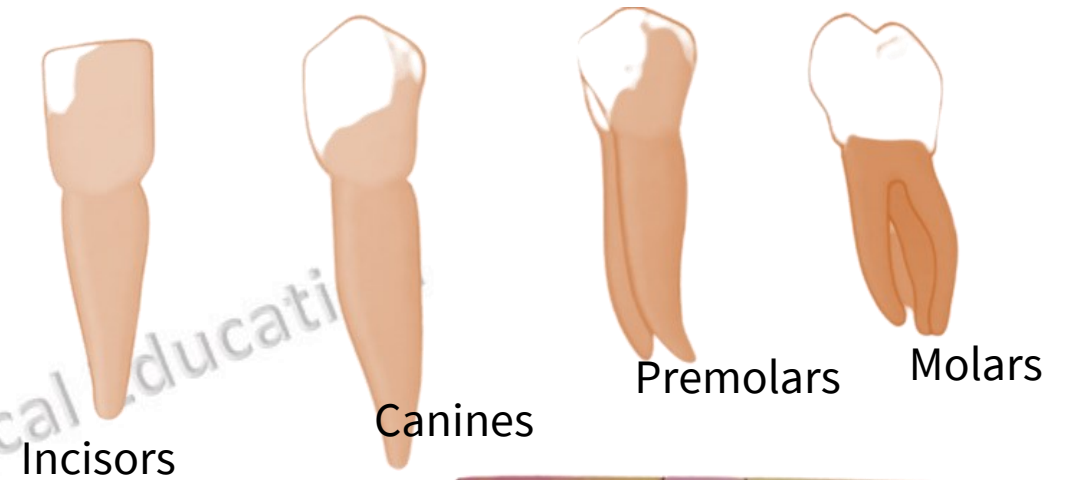
Sports & Physical Education





Types of Teeth

- Incisors- 4
- Canines -2
- Premolars - 4
- Molars - 6





□ Incisors

Incisors are the sharp teeth at the front of the mouth that bite into food and cut it into smaller pieces. They are flat with a thin edge. They are also called anterior teeth.

□ Canines

Canines are the sharp, pointed teeth that sit next to the incisors and look like fangs. Dentists also call them cuspids or eyeteeth. Canines are the longest of all the teeth, and people use them to tear food.

□ Premolars

Premolars, or bicuspid, are bigger than the incisors and canines. They have many ridges and help chew and grind up food.

□ Molars

Molars are the biggest of all the teeth. They have a large, flat surface with ridges that allow them to chew food and grind it up. The last molars to erupt are wisdom teeth, or third molars.

Teeth



Humans, like most other mammals, are diphyodont, meaning that they develop two sets of teeth.

Primary Teeth-

The first set, deciduous teeth, also called "primary teeth", "baby teeth", or "milk teeth", normally eventually contains 20 teeth. ten are found in the maxilla (upper jaw) and ten in the mandible (lower jaw), The dental formula for primary teeth in humans is

$$\frac{2.1.0.2}{2.1.0.2}$$

Primary teeth typically start to appear around six months of age

Teeth

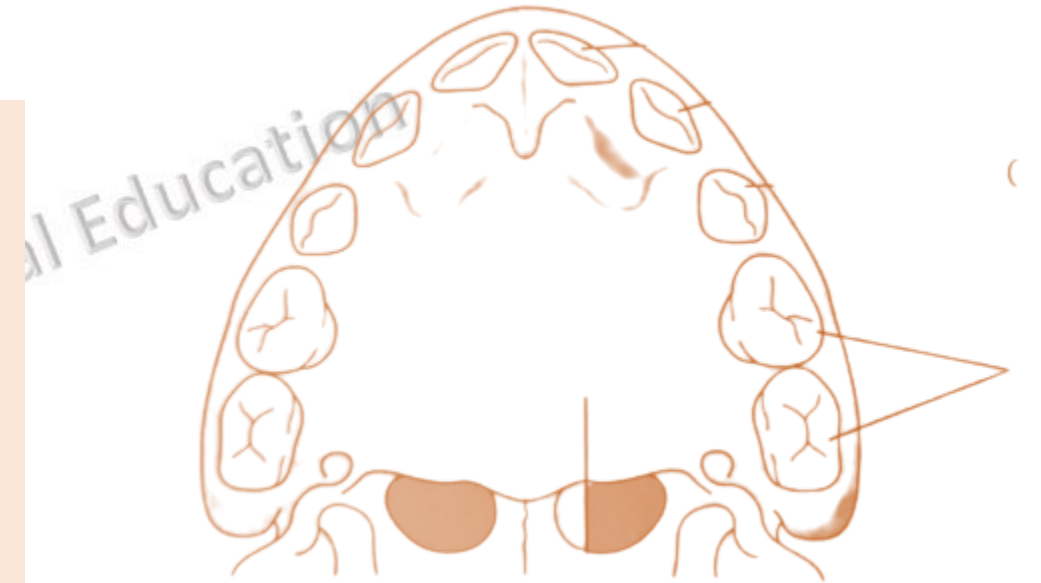


Permanent teeth-

Among permanent teeth, 16 are found in the maxilla and 16 in the mandible, for a total of 32. The dental formula is

2.1.2.3

2.1.2.3





Parts of Teeth

1. Crown- *The crown is the visible white part*

Outer Part

- Enamel

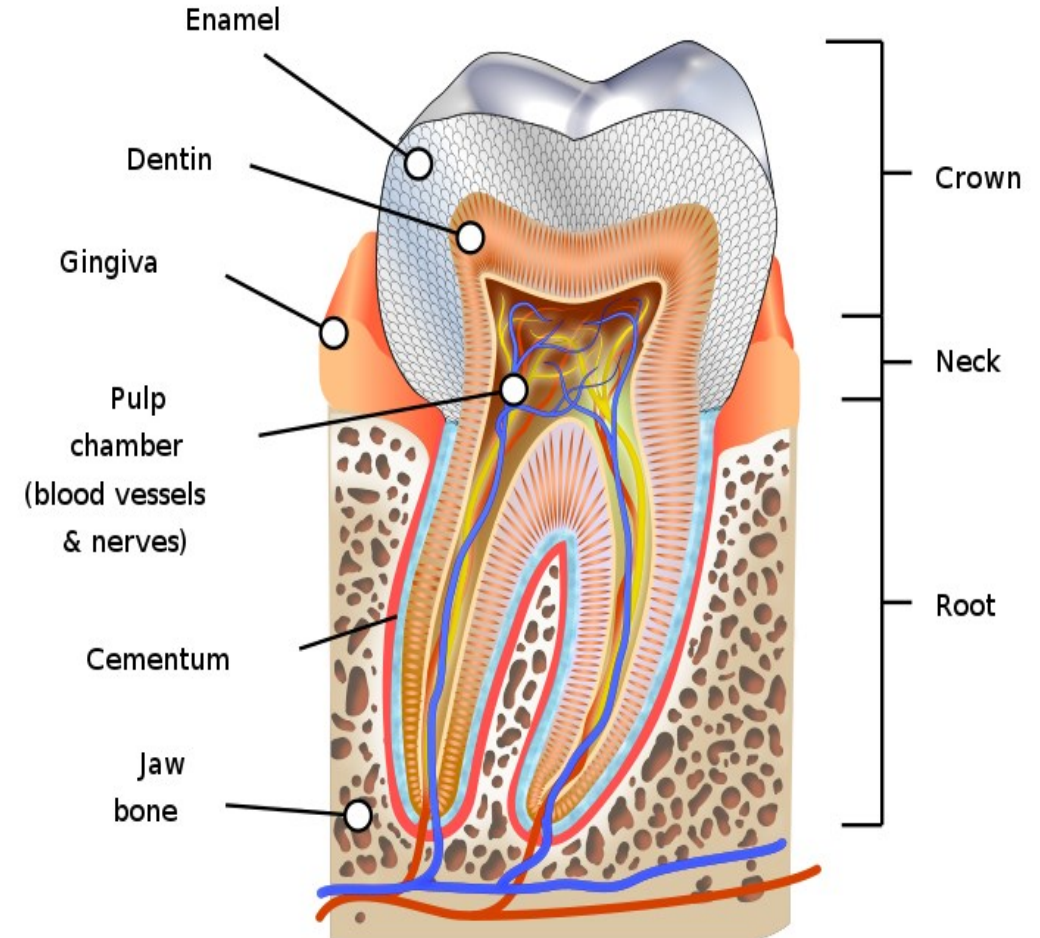
Middle Part

- Dentin

Inner Part

- Pulp – dental Cavity

2. Neck





Parts of Teeth

Root is the invisible part of the tooth hidden by the gums.

3. Root

Outer Part

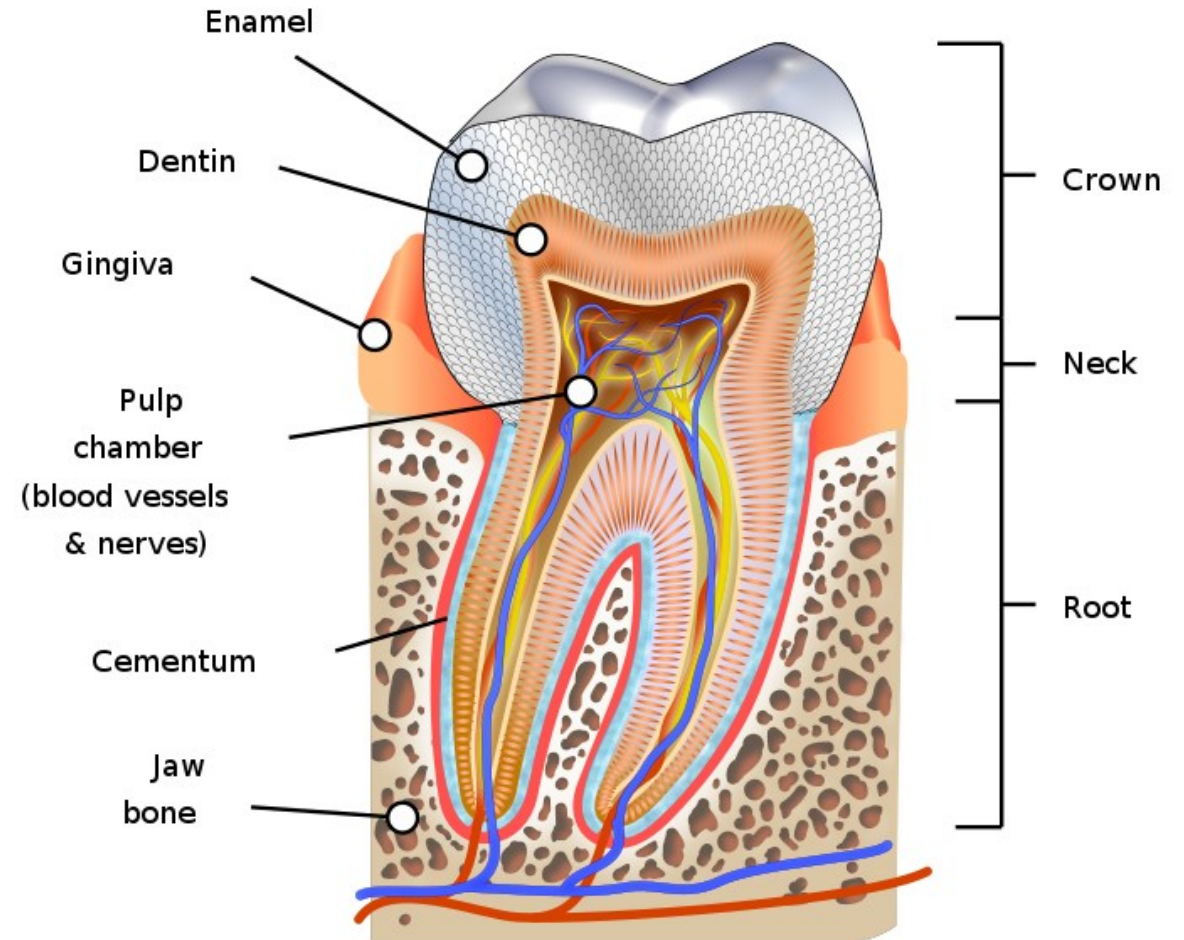
- *Cementum*

Middle Part

- *Dentin*

Inner Part

- *Root Canal*





Thank You for Watching



Sports and Physical Education



thakuranjna99



Sports and Physical Education

Sports & Physical Education

